

INSTALL INSTRUCTIONS FOR 06-22 FJ CRUISER APPROACH SERIES FRONT BUMPER

READ THROUGHOUT BEFORE INSTALLING BUMPER!

DETAILS:

- Bumper will fit 06-22 FJ Cruisers.
- Removal/cutting of factory bumper and center support brackets is required.
- Cutting of wheel well liner is required.
- Designed for stock up to 1" body lift and suspension lifted vehicles (any height). Having a body lift greater than 1" will result in a gap between the bumper and body.
- The bumper is only shipped as raw steel. There may be evidence of anti-spatter spray, oils, areas with light surface rust, small amounts of weld splatter, and shallow scratches caused during manufacturing and/or shipping.
- INTENDED FOR OFF-ROAD USE ONLY.
- Winch fitment info
 - The bumper was designed using the Harbor Freight Badlands Apex 12K with synthetic line WITHOUT needing to remove and remote mount the control box. Although it is still recommended to remote mount the control box to offer more clearance for the AC lines and added room to fit a cover over the winch when not being used.
 - Other similar sized or smaller winches may fit.
 - Must have a 4.5"x10" mounting pattern.
 - Depending on winch size you might have to relocate the control box and/or clock the winch drum.
 - Will NOT work with roller fairleads. Must be used with a hawse fairlead.

WHAT'S INCLUDED:

- BUMPER PARTS
 - 1X CENTER WINCH CRADLE WELDMENT
 - 1X CENTER ALUMINUM COVER
 - 1X LEFT WING WELDMENT
 - 1X RIGHT WING WELDMENT
 - HARDWARE
 - 8X M8*16MM FLANGED BUTTON HEAD BOLTS
 - 2X M6*14MM FLANGED BUTTON HEAD BOLTS
 - 10X M12*35MM YELLOW ZINC GRADE 8 FLANGED HEX BOLTS
 - 10X YELLOW ZINC GRADE 8 WASHERS (1.06 OD X .53 ID)
 - 10X M12 YELLOW ZINC GRADE 8 NYLON LOCKNUTS
 - 8X M10 ZINC FLANGE NUTS
 - 2X ALUMINUM WASHER PLATE
 - 2X WASHERS (1.00 OD X .41 ID)

- (OPTIONAL) MINI SKID
 - MINI SKID WELDMENT
 - HARDWARE
 - 3X M8*20MM FLANGED HEX HEAD BOLTS
 - 3X WASHERS (.69 OD X .34 ID)
 - 3X M8 NYLON LOCKNUTS

- (OPTIONAL) FRAME BRACKETS
 - 1X LEFT FRAME BRACKET
 - 1X RIGHT FRAME BRACKET
 - HARDWARE
 - 2X M12*30MM HEX HEAD BOLTS
 - 2X WASHERS (1.06 OD X .53 ID)
 - 2X M8*20MM FLANGED HEX HEAD BOLTS
 - 2X WASHERS (.69 OD X .34 ID)
 - 4X M10*35MM FLANGED HEX HEAD BOLTS
 - 4X WASHERS (1.00 OD X .41 ID)
 - 4X M10 NYLON LOCKNUTS

MODIFICATIONS TO VEHICLE:

*Some pics may be from the 4G 4runner or GX470, but it is the same process for the FJC.

- 1) Remove the stock bumper, grille, fog lights, crash bar, and center bracket. Leave the side brackets that help support your headlights (removed in pic).

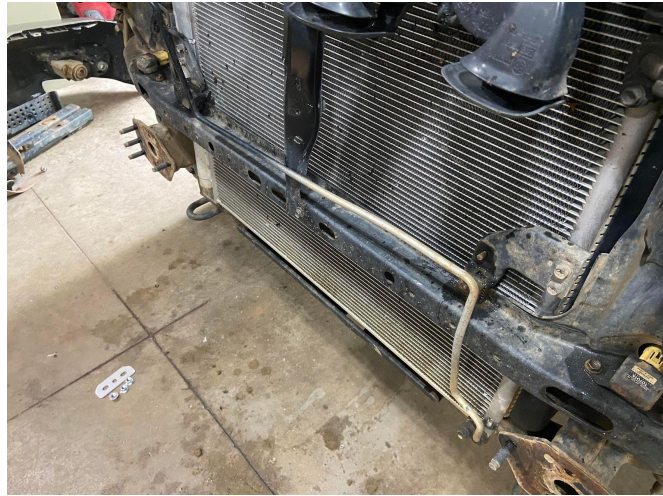


- 2) Cut wheel well liners. Using a sharpie or masking tape, mark a line going from the corner of the fender flare down to bottom of the liner that's closest to the truck frame. Ensure there are no wires directly behind your marked line. CAREFULLY cut along the line with a sharp box cutter.



3) (OPTIONAL) If running a winch perform the following.

a) Remove the AC line from the bracket and position the line inward towards the radiator.



b) Remove or cut back the bracket that sticks out near the center of the radiator. Can either trim it back or drill out the spot welds and remove it completely. If drilling out welds, be careful to not slip and damage the radiator. (Shown with it drilled out)



- c) Using a punch and/or hammer, CAREFULLY flatten out the edge protruding from the center vertical brace to make additional room for the AC lines to tuck in.



- d) Recommended to clean any cut or hammered areas and coat with spray paint to prevent rust from forming.

VEHICLE INSTALL:

- 1) Read through entire instructions.
- 2) Ensure all parts and hardware are accounted for.
- 3) All raw steel parts should be painted/powdercoated prior to install for rust protection.
- 4) Complete all modifications to the vehicle listed above.
- 5) (OPTIONAL) Install frame brackets. (Ignore the trans lines and brackets in pics bellow)
 - a) Install the frame brackets so the tabs are pointing inward.
 - b) Take the M12 bolt with large washer and install it into the lower threaded hole. Leave it somewhat loose.
 - c) Take the M8 bolt with smaller washer and install it into the upper threaded hole. Leave it somewhat loose.

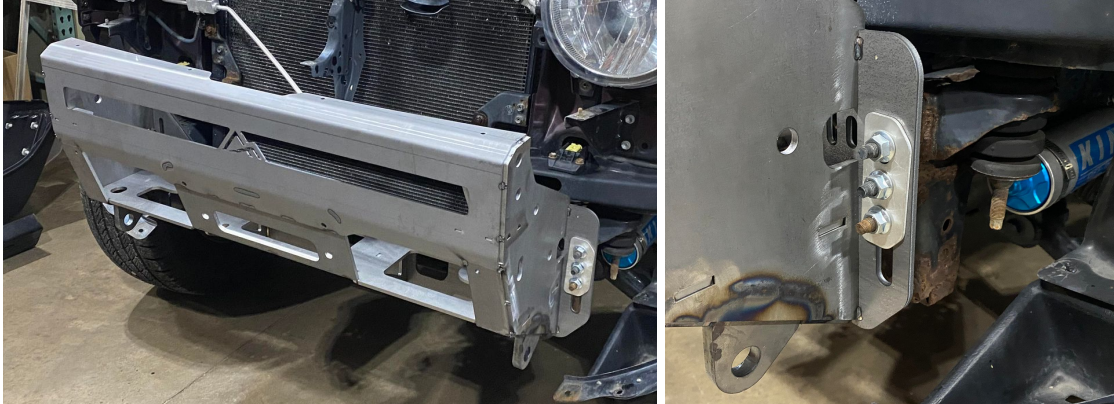


- 6) (OPTIONAL) Install mini skid.
 - a) Take the mini skid and line it up with the holes on the bottom of the winch cradle. It's MUCH easier to install while off the vehicle.
 - b) Take the 3X M8 bolts and pass them through the aligned holes.
 - c) Take the 3X washers and locknuts and install on the backside of the bolts. Leave them somewhat loose for now.



7) Install center winch cradle.

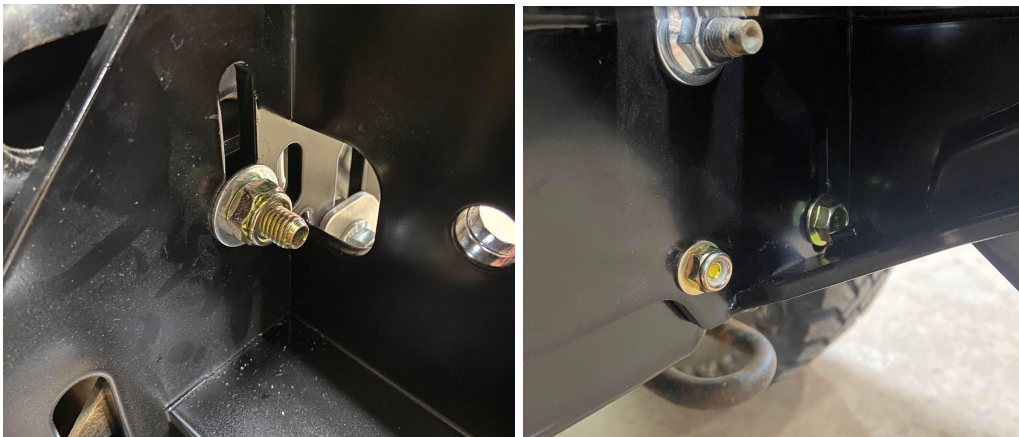
- a) Take the center winch cradle and install over the studs on the ends of the frame rails.
- b) Take the aluminum washer plates and install over the outer studs followed by the provided M10 flanged nuts. Leave somewhat loose for now.



- c) Take the 1" OD washer and install over the inner studs followed by the M10 flange nuts. Leave somewhat loose for now.



- d) (OPTIONAL) If running the frame brackets, take the 4X M10 bolts and pass them through the aligned slots. Install the washers and locknuts on the backside. Leave somewhat loose for now.



8) Install side wings.

- a) If running lights, it's highly recommended to install on the wings prior to putting the wings on the bumper.
- b) Align the wings to the sides of the winch cradle. It's helpful to either have a second set of hands or to use a clamp to hold them together.



- c) Take the flanged M12 bolts and install them through the aligned holes.
- d) Install washers and locknuts on the back sides of the bolts. Leave somewhat loose for now.
- e) On the upper two bolts (per side), position the bolts so they are protruding into the wings and the bolt heads are in the center winch cradle.
- f) Leave somewhat loose for now.



- 9) Adjust the bumper.
 - a) You can raise/lower the bumper on the mounting slots. Once it's at your preferred height, tighten down the nuts on the mounting studs.
 - b) If offroading where you will experience lots of body on frame flex/movement. It is recommended to leave a 1/4" to 1/2" gap between the bumper and the body.
 - c) There is a little adjustability in the rotation of the wing. Position them how you want and tighten down the nuts/bolts.
 - d) If necessary, you can also add washers between the wings and the sides of the winch cradle to act as shims and further adjust the position of the wings.



- 10) (OPTIONAL) Tighten hardware for the frame brackets.
- 11) (OPTIONAL) Adjust height of mini skid to preferred location and tighten the hardware.

12) (OPTIONAL) If running a winch, it is recommended to install it at this point.

13) (OPTIONAL) Install center lightbar.

14) (OPTIONAL) Wire lights.

a) Sorry no detailed instructions for this step as there are too many different ways to do it.

But contact us if you are having trouble and we'd be happy to help or provide resources.

15) Install top aluminum filler plates using the M6*12mm bolts and locknuts.



16) Install aluminum cover.

a) Align the slots on the cover over threaded holes on the lower front of the bumper.

b) Take the 8X M8 flanged head bolts and install them into the threaded holes and tighten down.



17) Reinstall grille.

18) If your state requires a front license plate, install it centered on the aluminum skid using the 2X M6 flanged head bolts. You will need to bend the plate forward to make it actually visible. Do NOT overtighten bolts!

19) Enjoy your new bumper and send us cool pictures!

