

INSTALL INSTRUCTIONS FOR 14+ NON-LIMITED 4RUNNER BAJA MID-PRO FRONT BUMPER

READ THROUGHOUT BEFORE INSTALLING BUMPER!

DETAILS:

- This version will work with 2014+ Limited Toyota 4runners only. The "wings" of the bumper are bent differently than the OG and non-limited versions.
- The bumper covers the important bits up front then the customer "viper" cuts the bumper the rest of the way to the fenders. This gives the customer a little more creative freedom and also allows for more options with aftermarket fenders.
- Cutting of factory plastic bumper is required.
- On 14+ Limited models, it will work with stock body height, up to 2" body lift, and suspension lifted vehicles.
- Lights are NOT included. View list of recommended lights under the RECOMMENDED LIGHTS tab.
- On raw steel orders there may be evidence of anti-spatter spray, oils, areas with light surface rust, small amounts of weld splatter, and shallow scratches caused during manufacturing and/or shipping.
- On powdercoated orders, there may be evidence of scratches or rub marks caused during handling and/or shipping. There may also be scratches or weld splatter underneath the coating. Powdercoat is NOT warranted in any way! However we try our best to package appropriately to avoid any damage during transit.
- Not guaranteed to work with all aftermarket skid plates. If the skid ends just under the lower crossmember or sticks past the front surface by less than 1-1/4", it should work.
- Winch fitment info
 - The bumper was designed using the Harbor Freight Badlands Apex 12K with synthetic line. Other similar sized or smaller winches may fit.
 - Must have a 4.5"x10" mounting pattern.
 - Depending on winch size you might have to relocate the control box, clock the winch drum, and/or bend/move AC and/or fluid lines.
- INTENDED FOR OFF-ROAD USE ONLY.

WHAT'S INCLUDED:

- BUMPER PARTS
 - 1X BUMPER WELDMENT
 - 1X ALUMINUM COVER
 - HARDWARE
 - 6X M8*16MM FLANGED BUTTON HEAD BOLTS
 - 8X M10*30MM FLANGED HEX HEAD BOLTS
 - (WILL ONLY GET 2 IF ORDERING WITH FRAME BRACKETS)
 - 2X ALUMINUM WASHER PLATES
 - 2X WASHERS (1.00 OD X .41 ID)

- (OPTIONAL) V2 FRAME BRACKETS
 - 1X LEFT FRAME BRACKET
 - 1X RIGHT FRAME BRACKET
 - HARDWARE
 - 2X M12*30MM HEX HEAD BOLTS
 - 2X WASHERS (1.06 OD X .53 ID)
 - 2X M8*20MM FLANGED HEX HEAD BOLTS
 - 2X WASHERS (.69 OD X .34 ID)
 - 6X M10*30MM FLANGED HEX HEAD BOLTS
 - 6X WASHERS (1.00 OD X .41 ID)
 - 6X M10 FLANGE NUTS

*Actual hardware provided may be slightly different (color/length) than hardware used in pics.

WHAT YOU WILL NEED:

- TAPE MEASURE
- VEHICLE JACK
- CUTTING TOOL FOR TRIMMING STOCK PLASTIC BUMPER (Multitool recommended)
- PAINTERS TAPE
- SHARPIE
- DEBURRING/SANDING TOOL
- PROPER SAFETY GEAR / EYE PROTECTION
- BASIC MECHANIC / AUTOMOTIVE TOOLS (HAMMERS, WRENCHES, ECT...)

**ALWAYS USE PROPER SAFETY GEAR AND EYE PROTECTION
WHEN CUTTING STOCK BUMPER!**

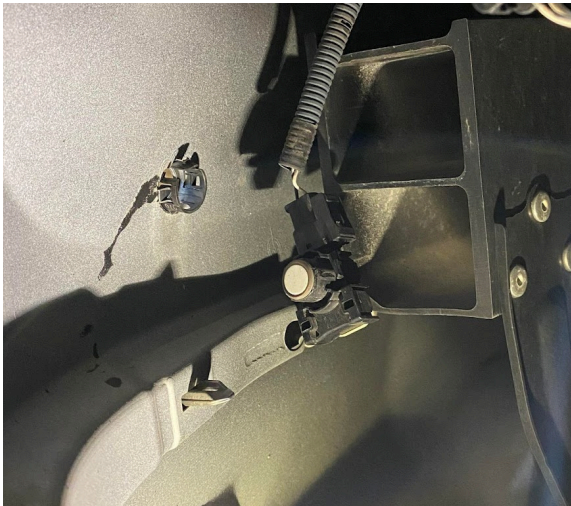
HAVE ASSISTANCE WHEN LIFTING / INSTALLING AFTERMARKET BUMPER!

INSTALL STEPS:

- 1) If you ordered the new bumper as raw steel, prep and paint all the parts. Painting any aluminum parts is optional. Allow paint to cure before installing.
- 2) Leave the main portion of the stock bumper on for now. Remove plastic pieces underneath.



- 3) Remove sensors from lower bumper.



- 4) Apply painter's tape to bumper to protect paint and draw cut lines on
- a) Apply tape to the lower crease of the valence under the fog lights.
 - b) Apply tape from the corner of the crease to the wheel well, or however you want to make the "viper" cut. Recommended to leave 2.5" of material in the wheel well, measured down from the body line.
 - c) Apply tape at the inner end of the crease to where it meets the lower grille mesh.
 - d) Use a flexible straight edge to draw a line from the outer corner of the crease to the 2.5" mark on the edge of the wheel well.





- 5) Undo any nuts / bolts / wiring attaching the stock plastic bumper to the vehicle and remove it. Or can leave it on the vehicle if desired, just make sure to not cut too deep behind the bumper and accidentally cut any wiring / fluid lines.
- 6) CAREFULLY cut along the lines. Cut the supports just under the top lip on the lower grille. Once cut all the way across, use a sander and/or deburring tool to clean up the cut.



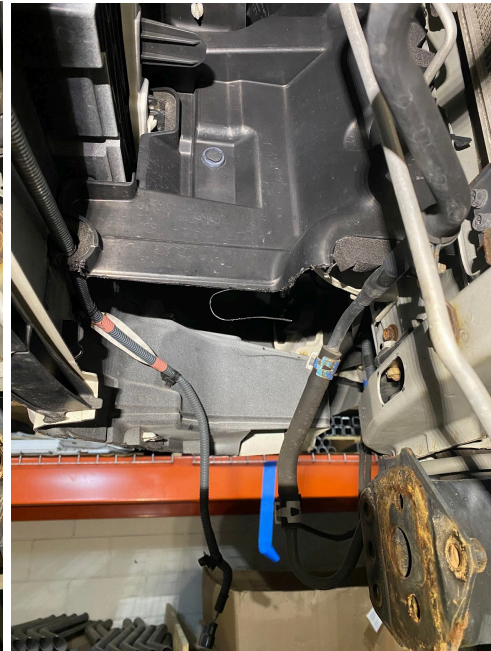
7) Remove the crash bar.



8) Cut wheel well liners.



9) Cut air dams at the same height or above height of the bumper.



10) Drill a large hole in the top surface of the fog light pocket and reroute the fog light wiring through the hole.



11) Cut back edges of the fog light pocket at an angle.



12) If running a winch, perform the following:

- a) Bend in passenger side AC line.
- b) Hammer in flange on center support brace.
- c) Prep wiring for winch / lights.



13) If running the frame brackets, refer to the separate frame brackets install instructions and install them now.

14) If you haven't already, reinstall the top cut portion of the stock bumper and reattach any wiring.

15) If running a winch or lights within the bumper, install them now.

16) If desired, apply some weather stripping / edge guard to the cut edges of the stock bumper.

17) Using either a jack or two people, carefully lift the new bumper up to the vehicle so it is against the front frame plates. While holding it in place loosely install the inner M10 bolts with washers. Raise the new bumper till it is against the cut edge of the stock bumper. It is recommended to leave a $\frac{1}{8}$ " to $\frac{1}{4}$ " gap to prevent rubbing. There is also a little side to side adjustability. Once raised, tighten down the inner M10 bolts enough to hold the bumper.



18) Install and tighten all 3x outer M10 bolts with aluminum washer plate per side.



19) Install the lower aluminum cover using the 6x M8 flanged button bolts.



20) Reinstall parking sensors.



21) Send in cool pictures!